

# TOP RULATE

**DAF XF 460 FT|SSC|INTARORDER|PCC| 1 AN GARANTIE DAF**



**€47,900**

**Inmatriculare:** 05.2017

**Km Rulati:** 346.704 km

**Norma:** EURO6

**Garantie:** DA

**Capacitate Motor:** 12.902 cm<sup>3</sup>

**Sasiu:** Standard

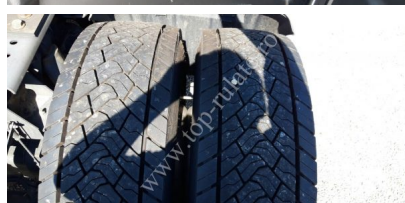
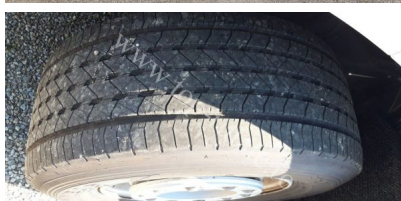
**Locatie:** Germania

**Cod produs:** A0359 | **Categorie:** [Autotractoare](#) | **Tag:** [Camioane cu Garantie](#)



# TOP RULATE

## GALERIE PRODUS



## DESCRIERE PRODUS

Cabina SSC cu doua paturi, Scaune pneumatice cu multiple reglaje, Incalzire in scaune, Computer de bord, Inchidere centralizata cu telecomanda, Incalzire in stationare, Aer Conditionat cu reglaj automat, Aer conditionat in stationare, Frigider, Geamuri electrice, Volan multifunctional, Directie asistata electronic, Tempomat, ABS, EBS, ESP, Motor Euro 6, Putere Motor: 460CP, Transmisie automata ZF TraXon 12 viteze, Capacitate motor 13l, Frana suplimentara pe cutia de viteze ZF-Intarder, Doua rezervoare de combustibil 765l + 340l, Rezervor AdBlue 90l, Spoilere cabina, Spoilere laterale, Doua perechi goarne (aer comprimat) montate pe cabina stanga/dreapta, Parasolar exterior, Lumini de zi LED, Lumini de ceata, Dimensiune anvelope fata - 385/55 R22.5, Dimensiune anvelope spate 315/70 R 22.5, Ampatament 3600mm.

Sisteme de securitate:

Adaptive Cruise Control (ACC)

Collision warning system (FCW) - Forward Collision Warning - sistem anticoliziune;

Hill Start Aid, (starting aid) - Asistent la pornirea in rampa;

Lane departure warning system (LDWS) - sistem de avertizare a depasirii involuntare a benzii de rulare;

# **TOP RULATE**

Predictive Cruise Control (PCC) – Controlul predictiv al vitezei de croaziera;

**Prima Inmatriculare: 05.2017, Rulaj: 346.704 km**

**Istoric service disponibil. Autotractorul a avut contract de service Full Care. Locatie Germania. 1 AN GARANTIE\* INTERNATIONALA DAF**

Posibilitate de finantare fara TVA, cu avans incepand de la 10%, pentru firmele din Romania.

\*Garantie Internationala oferita de producator pe grupul motopropulsor (motor, cutie de viteze, axe)

# TOP RULATE

## INFORMATII ADITIONALE

<b>Marca:</b>	DAF
<b>Tip:</b>	XF
<b>Putere Motor:</b>	460CP
<b>Norma Poluare:</b>	EURO6
<b>Capacitate Motor:</b>	12902 cm <sup>3</sup>
<b>An Productie:</b>	2017
<b>Km Rulati:</b>	346.704 km
<b>Nr. Axe</b>	2
<b>Tip Cabina:</b>	SSC
<b>Nr. Paturi:</b>	2
<b>Sistem de franare suplimentar:</b>	ZF Intarder
<b>Tip Sasiu:</b>	Standard
<b>Anvelope Fata:</b>	385/55 R22.5
<b>Anvelope Spate:</b>	315/70 R22.5
<b>Culoare:</b>	Alb